



## TALON Encoder Models: 4K-SC | UHD-SC H.265 | H.264



© 2021 Osprey Video. All rights reserved.

Osprey® is the registered trademark of Osprey Video. Microsoft®, Any other product names, trademarks, trade names, service marks, or service names owned or registered by any other company and mentioned herein are the property of their respective companies.

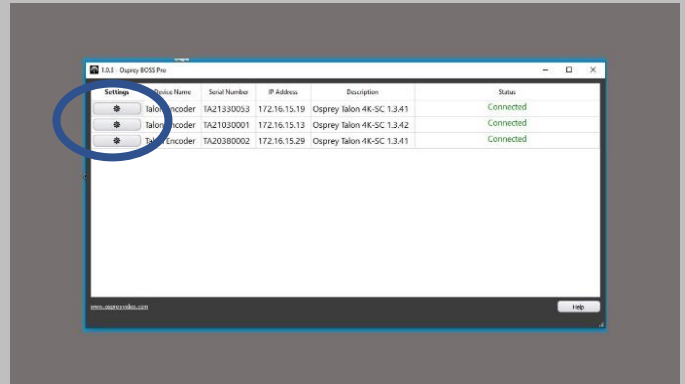
No part of this specification may be reproduced, transcribed, transmitted or stored in a retrieval system in any part or by any means without the express written consent of Osprey Video.

Osprey Video reserves the right to change any products herein at any time and without notice. Osprey Video makes no representations or warranties regarding the content of this document, and assumes no responsibility for any errors contained herein.

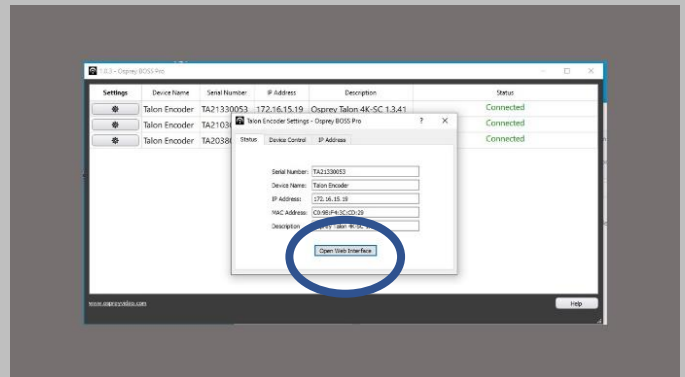
# Configure the Osprey Encoder

- Open the Osprey BOSS PRO application
- Select the correct encoder by clicking (\*)

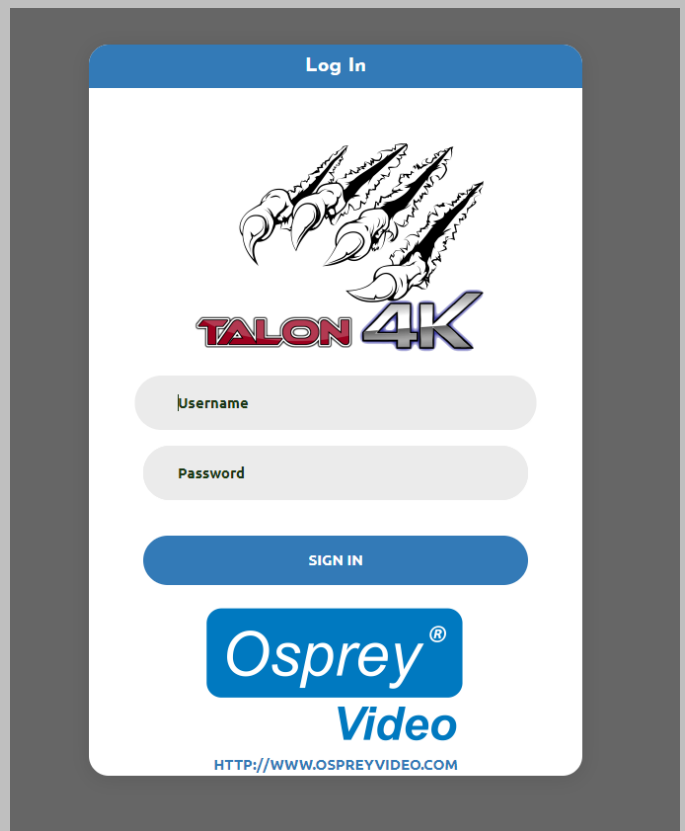
Note: If the Encoder's IP address is known you can enter it direct into your browser



- When the SETTINGS window opens click "Open Web Interface"

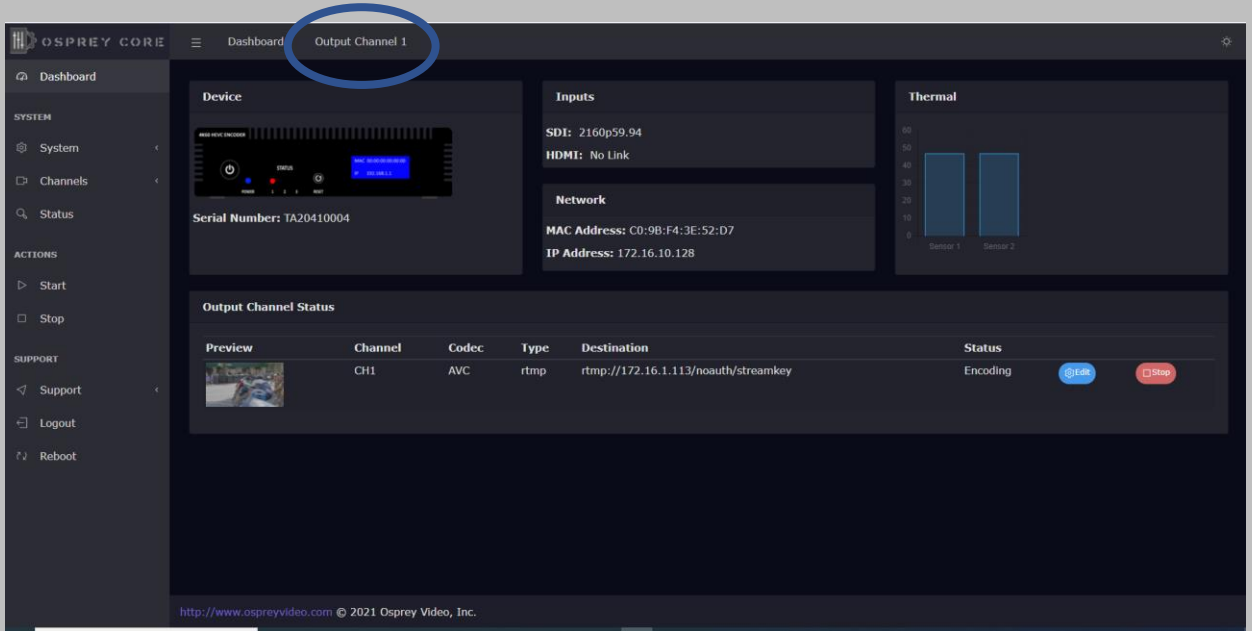


- When the browser opens enter  
Username: admin  
Password: osprey

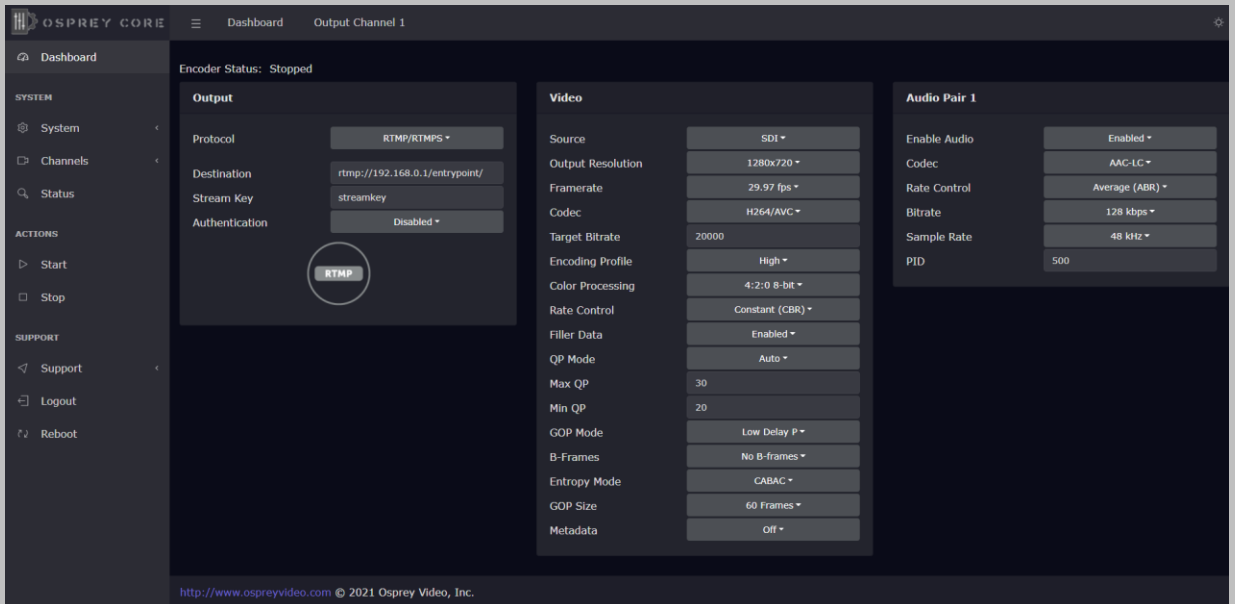


# Configure the Osprey Encoder

- Web GUI opens to the Encoder DASHBOARD
- Select “Output Channel 1”



- Encoder configuration settings




# Configure the Osprey Encoder

Select the delivery protocol first. The video and audio options will change depending on what output method is selected.

**Output**

Protocol	TS over SRT ▾
SRT Mode	Caller ▾
SRT Dest Address	127.0.0.1
SRT Port	2088
Latency	125



Select the video encoding settings. Note that the default settings are generic. Your needs may be different. It is especially important to select a bitrate that can be supported by your network.

**Video**

Source	SDI ▾
Output Resolution	1280x720 ▾
Framerate	29.97 fps ▾
Codec	H264/AVC ▾
Target Bitrate	20000
Encoding Profile	High ▾
Color Processing	4:2:0 8-bit ▾
Rate Control	Constant (CBR) ▾
Filler Data	Enabled ▾
QP Mode	Auto ▾
Max QP	30
Min QP	20
GOP Mode	Low Delay P ▾
B-Frames	No B-frames ▾
Entropy Mode	CABAC ▾
GOP Size	60 Frames ▾
Metadata	Off ▾

# Configure the Osprey Encoder

The encoder supports up to eight stereo pairs of audio. Some protocols (rtmp) only support a single pair. Enable audio and set the codec and bitrates from this panel.

The screenshot shows the configuration panel for the Osprey Encoder, divided into four sections for Audio Pair 1 through Audio Pair 4. Each section contains a list of settings and a dropdown menu for the 'Enable Audio' status.

Audio Pair	Enable Audio	Codec	Rate Control	Bitrate	Sample Rate	PID
Audio Pair 1	Enabled	AAC-LC	Average (ABR)	128 kbps	48 kHz	500
Audio Pair 2	Disabled					
Audio Pair 3	Disabled					
Audio Pair 4	Disabled					

To begin encoding, select “Start” from the action menu.

